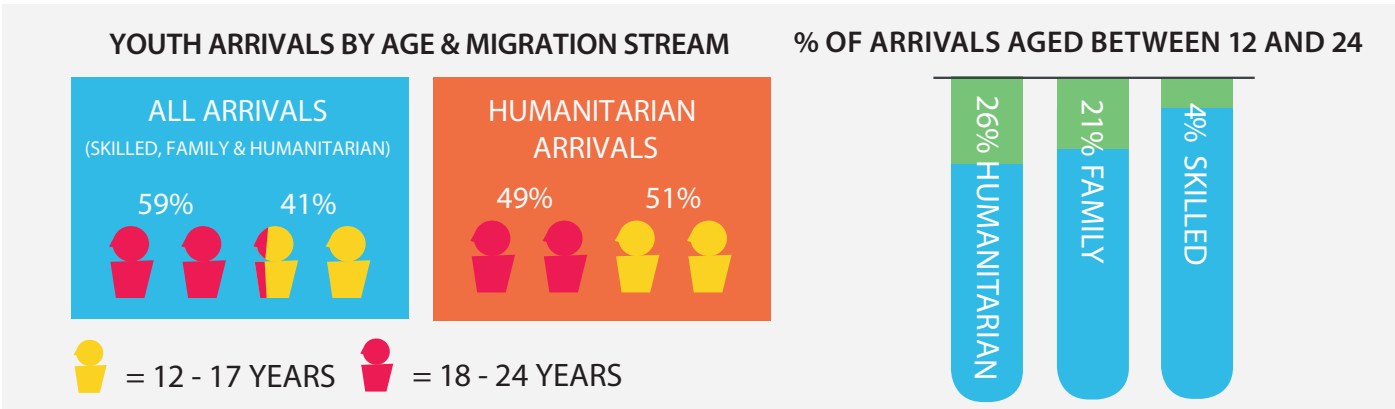
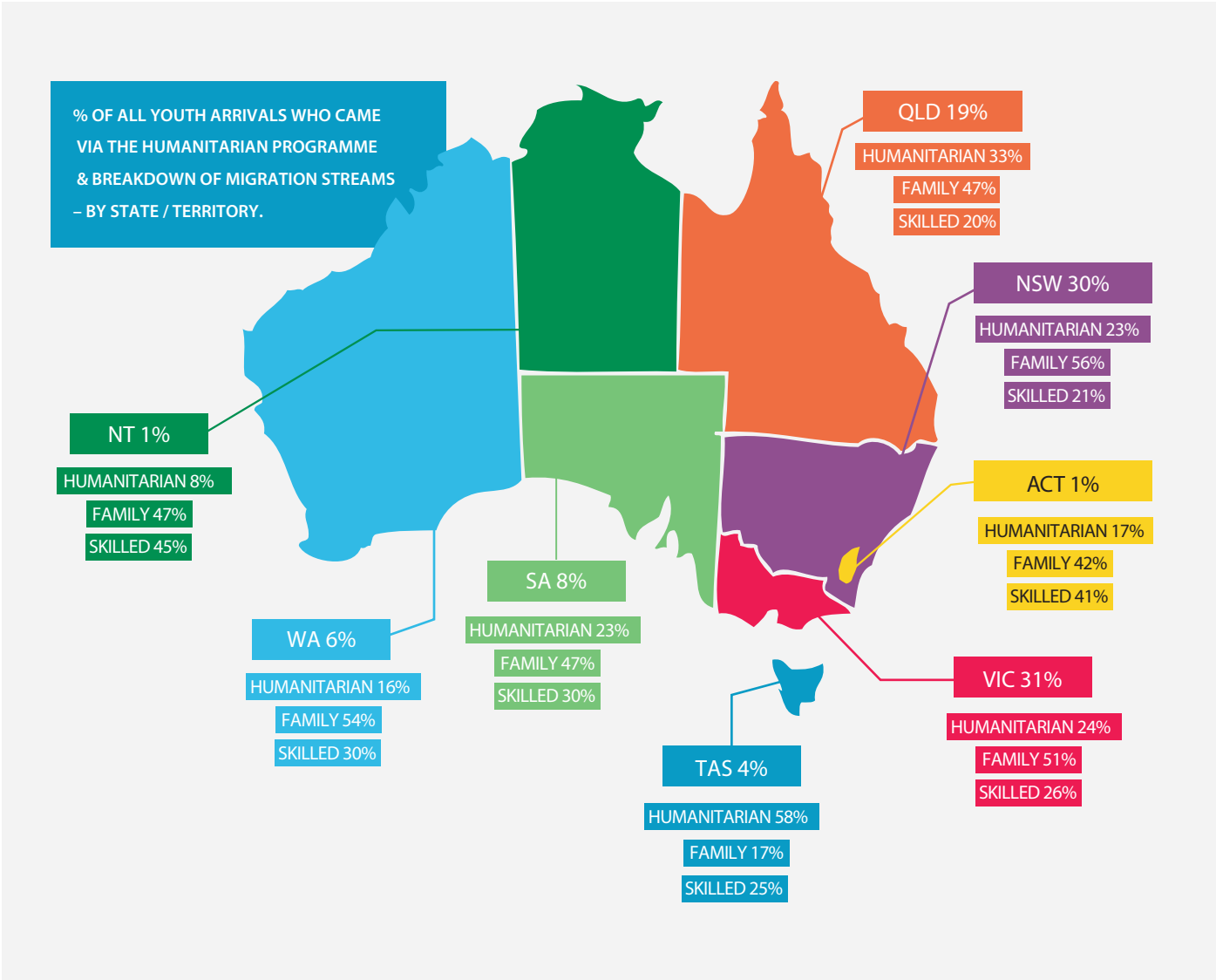
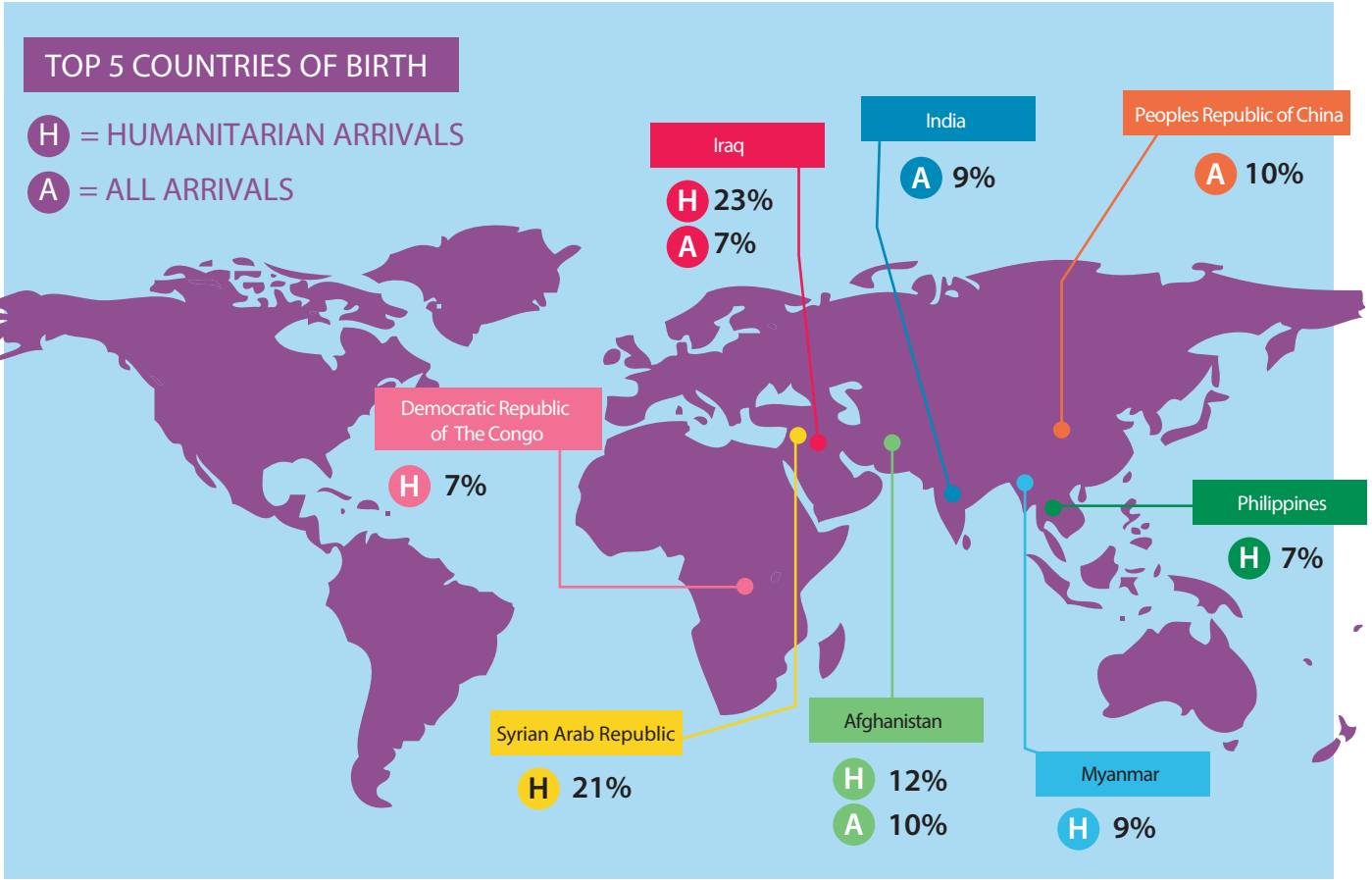


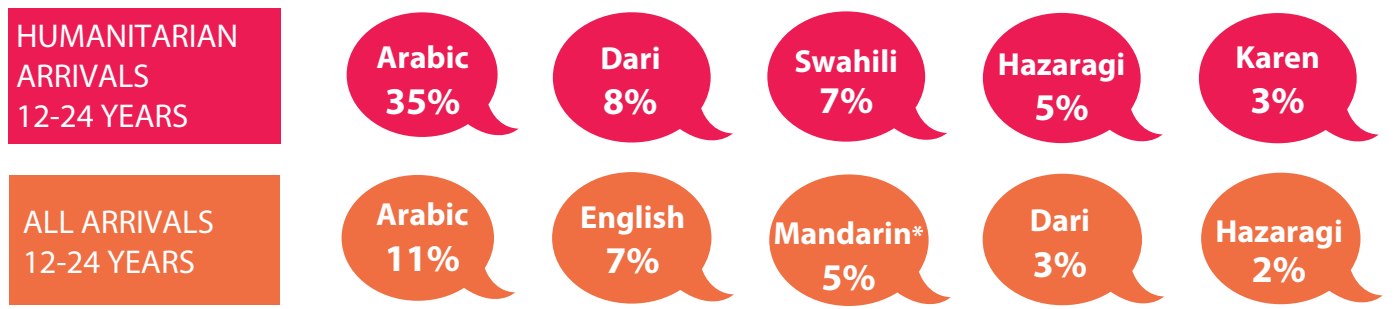
MIGRATION STREAM (12-24 yrs)

	Male	Female
Humanitarian Arrivals	51%	49%
Family Arrivals	36%	64%
Skilled Arrivals	43%	57%





TOP 5 LANGUAGES



* & Chinese not further defined

RELIGIONS OF HUMANITARIAN ARRIVALS 12-24 YEARS

Christianity	Islam	Other religions	Buddhism	Hinduism	Secular Beliefs*	Not recorded	* & other spiritual beliefs & no religious affiliation
52%	30%	11%	4%	1%	0%	2%	